

# ***IBM® DB2® Web Query for i™***

## ***Instructions for Upgrading from 2.1 to 2.2***

***(Updated 4/15/2016)***

This document provides instructions for upgrading DB2 Web Query 5733WQX from release 2.1 to 2.2. If you are newly installing Web Query (not upgrading from an older release) or installing a new option, refer to the Web Query 2.2 installation instructions at <http://ibm.co/db2wqinstallation>.

When Web Query 2.2 is installed on an IBM i partition that already has 2.1 installed, an upgrade installation is performed. The old release is replaced and is no longer available.

Metadata and configuration settings, such as adapter connections or language selections, in the integrated file system (IFS) directory /qibm/userdata/qwebqry are preserved and migrated to the new release. Likewise, the Web Query repository in library QWQREPOS, containing reports, schedules, and distribution lists, is preserved.

Following are the steps to upgrade Web Query from release 2.1 to 2.2.

### **1. End Web Query**

Use the Work Web Query (WRKWEBQRY) command to check if Web Query is active and to end it.

### **2. Install prerequisite products and PTFs**

Review the 5733WQX prerequisite products, options and PTFs listed in Info APAR III4818, and verify that all prerequisites are installed for your version of IBM i. The APAR is located at <https://ibm.biz/Bd4vLJ>.

### **3. Restore the Web Query licensed program**

The IBM i standard and keyed media set will include DB2 Web Query 2.2.0 when ordered after April 15, 2016. The 5733WQX base product and all options are included on the F\_MULTI\_NLV disc. The 2.2.0 disc is identified by the following label information.

```
IBM i
DB2 Web Query for i
5733-WQX V2.2.0
F_MULTI_NLV
LCD8-1900-02
```

If your Web Query disc is older than that, order a new copy or download the image from Entitled Software Support (ESS). Detailed instructions for ESS are in the DB2 Web Query for i FAQ document at <http://ibm.co/db2wqfaq>.

To upgrade the base product and any optional features, use the Restore Licensed Program (RSTLICPGM) command. Minimally, you must install the base product, Express or Standard Edition, and Developer Users options. Example commands are shown below. Substitute OPT01 with your optical drive. For each restore command, read the license agreement and press F14 to accept it.

- RSTLICPGM LICPGM(5733WQX) DEV(OPT01) – **Base product**
- RSTLICPGM LICPGM(5733WQX) DEV(OPT01) OPTION(1) – **Express Edition**
- RSTLICPGM LICPGM(5733WQX) DEV(OPT01) OPTION(2) – **Standard Edition**

- RSTLICPGM LICPGM(5733WQX) DEV(OPT01) OPTION(4) – **Developer Users**
- RSTLICPGM LICPGM(5733WQX) DEV(OPT01) OPTION(5) – **Developer Workbench Users**
- RSTLICPGM LICPGM(5733WQX) DEV(OPT01) OPTION(6) – **Runtime Enablement Groups**
- RSTLICPGM LICPGM(5733WQX) DEV(OPT01) OPTION(7) – **JD Edwards Adapter**
- RSTLICPGM LICPGM(5733WQX) DEV(OPT01) OPTION(8) – **DataMigrator for i**

#### **4. Add license keys**

New license keys are required for the 2.2.0 base product and options. Add them using the Add License Key Information (ADDLICENSE) command. Refer to the DB2 Web Query for i FAQ document at <http://ibm.co/db2wqfaq> for detailed information on ordering and licensing an upgrade, or accessing the license keys on ESS.

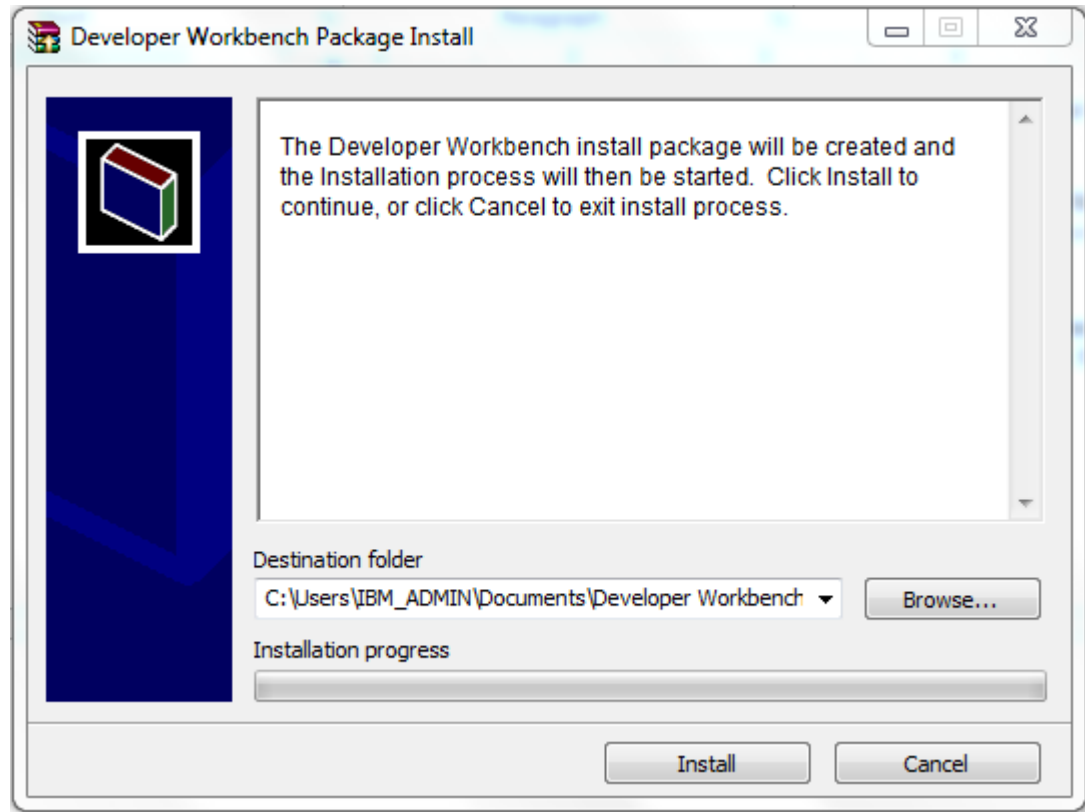
#### **5. Start Web Query**

To start DB2 Web Query, use either the Start Web Query (STRWEBQRY) or Work with Web Query (WRKWEBQRY) command.

#### **6. Install the Developer Workbench client (optional)**

If you installed option 5, Developer Workbench Users, then the licensed users of this option should download and install the 2.2.0 version of the Developer Workbench client on their PCs. To install the client, follow these steps:

- A. Download the two Developer Workbench client files, in binary, from the IFS directory /qibm/ProdData/QWEBQRY/DeveloperWorkbench to a folder on the Windows PC. The file names are:
  - [WQDevWork220.sfx.part1.exe](#)
  - [WQDevWork220.sfx.part2.rar](#)
  - [WQDevWork220.sfx.part3.rar](#)
- B. Run WQDevWork220.sfx.part1.exe on the PC. The Dev Workbench Package Install dialog box displays, as shown in the following image.



Note: Clicking Install will create a new WQDevWork220.exe file in the same folder where you are running WQDevWork220.sfx.part1.exe. Optionally, you can change the destination folder for the new file.

- C. Click *Install*. The WQDevWork220.exe file will be created in the Destination folder. The WQDevWork220.exe will then automatically run, and the Developer Workbench installation wizard will start.

The upgrade is now complete and you are ready to resume creating and running reports. For questions upgrading to Web Query release 2.2.0, contact [QU2@us.ibm.com](mailto:QU2@us.ibm.com).